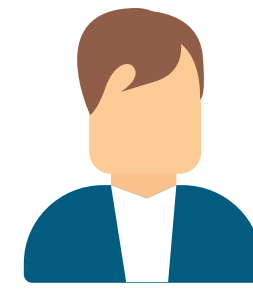
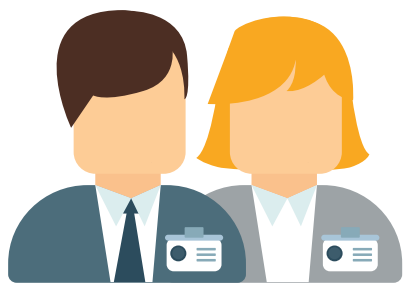


# If I am a new mutualist, What should I do?



## **IF YOU BECOME MEMBER THROUGH YOUR COMPANY**

## **IF YOU BECOME MEMBER INDIVIDUALLY, ON YOUR OWN**



Your company has decided to be part of the Mutuality and, whatever the system, invests money for your future pension.

Once agreed and set up:



First contribution: The company sends us a file with your data and makes us your first contribution €€€.



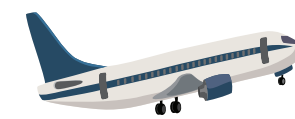
Upon receiving the first installment, Loreto will send you a welcome pack: Your username and password will be available to register in the Private Area of our website. and two forms: Membership and Beneficiaries.



You have to return those completed and signed forms. You will need your personal data and copy of the ID.



**CONGRATULATIONS !** You are a mutualist. **WELCOME TO THIS GREAT FAMILY.** You will find all your information in your Private Area.



You are from the airline sector and you have decided to join Loreto's Mutuality, on your own, individually.



We will provide you the Membership and Beneficiaries forms, to complete and return them to us. You will need your personal data, copy of ID, account number and document proving to be from the airline sector (copy of last payroll or contract).



And right there decide how many €€ you want to contribute and how often, as you wish. Loreto Mutua will take charge of billing you the amount you have decided to contribute.



Upon receiving the first installment, Loreto will send you a welcome pack: Your username and password will be available to register in the Private Area of our website.



**CONGRATULATIONS !** You are a mutualist. **WELCOME TO THIS GREAT FAMILY.** You will find all your information in your Private Area.

You can contact us in the nº **T: 91 758 96 50** and email [info@loretomutua.com](mailto:info@loretomutua.com) to help you.

[www.loretomutua.com](http://www.loretomutua.com) Pº Castellana, 40. Madrid